



USAID
FROM THE AMERICAN PEOPLE



TOOLS AND RESOURCES ROUNDTABLE BOOKLET

Photo: Kiyori Ueno, UN World Food Program, 2013

Food Assistance For Nutrition Evidence Summit
June 27-28, 2018 | Washington Plaza Hotel | Washington D.C.

Table of Contents

Focus on Families and Culture: A Guide for Conducting a Participatory Assessment on Maternal and Child Nutrition.....	2
Stories-Without-an-Ending: An Adult Education Tool for Dialogue and Social Change	2
Infant and Young Child Feeding in Emergencies (IYCF-E) Toolkit: Rapid Start-up Resources for Emergency Nutrition Personnel.....	3
A Tool for Framing a Discussion between Nutrition and Agriculture Specialists.....	3
A Training Workshop Guide: Planning for Qualitative Research for Nutrition	4
Nutrition Program Design Assistant: A Tool for Program Planners (NPDA).....	4
Guide to Anthropometry: A Practical Tool for Program Planners, Managers and Implementers	5
WFP LESS Last Mile.....	5
Optimus	6
Last Mile Mobile Solution LMMS ®	7
Systematic Cost Analysis Tool (SCAN)	9
FAQR Supply Chain Optimization Model	9
Infant and Young Child Feeding (IYCF) Image Bank.....	9
Commodity Management (CM) Toolkit.....	10
REFINE (Research Engagement on Food Interventions for Nutritional Effectiveness)	11
NutVal	12
Fill the Nutrient Gap.....	13
FAQR Decision Support Tool for More Cost-Effective Programming of Specialized Nutritious Foods	15
FAO/WHO GIFT (Global Individual Food Consumption Data Tool).....	16

This work was made possible through support provided by the Office of Food For Peace, Bureau for Democracy, Conflict, and Humanitarian Assistance, U.S. Agency for International Development, under the terms of Contract No. AID-OAA-C-16-00020. The opinions expressed herein are those of the author(s) and do not necessarily reflect the views of the U.S. Agency for International Development.

Focus on Families and Culture: A Guide for Conducting a Participatory Assessment on Maternal and Child Nutrition

Organization: The Grandmother Project

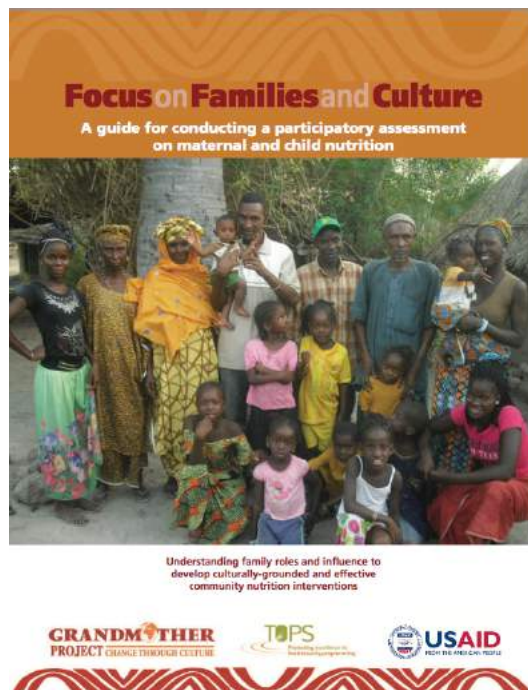
Presenter(s): Judi Aibel & Julia Crowley

Contact: judiaibel@grandmotherproject.org;
jcrowley@savechildren.org

Description: This tool is a guide for program managers and planners on planning and conducting a rapid community assessment on family roles and influence related to the first 1,000 days of life.

Intended Use/Users: Program planners and managers

Access: <https://www.fsnnetwork.org/focus-families-and-culture-guide-conducting-participatory-assessment-maternal-and-child-nutrition>



Stories-Without-an-Ending: An Adult Education Tool for Dialogue and Social Change

Organization: The Grandmother Project

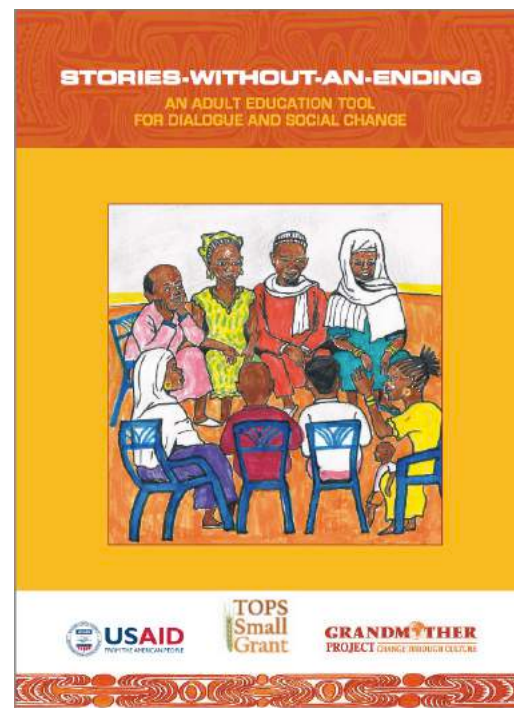
Presenter(s): Judi Aibel & Julia Crowley

Contact: judiaibel@grandmotherproject.org;
jcrowley@savechildren.org

Description: This is an adult education tool which can be used to actively engage community groups in the discussion of issues of priority to them and/or development programs, and to catalyze the discussion of those issues in the wider community.

Intended Use/Users: Program managers and implementers

Access: <https://www.fsnnetwork.org/stories-without-ending-adult-education-tool-dialogue-and-social-change>



Infant and Young Child Feeding in Emergencies (IYCF-E) Toolkit: Rapid Start-Up Resources for Emergency Nutrition Personnel

Organization: Save the Children

Presenter(s): Sarah Butler & Julia Crowley

Contact: sbutler@savechildren.org;
jcrowley@savechildren.org

Description: The IYCF-E Toolkit has been designed to promote best practice and rapid implementation of infant and young child feeding in emergencies. The toolkit aims to meet the needs of emergency nutrition program managers, coordinators and advisors who are responsible for program design, implementation and management of IYCF-E programs in emergency contexts.

Intended Use/Users: Emergency nutrition program managers, coordinators, or advisors

Access: <https://www.fsnnetwork.org/iycf-e-toolkit-rapid-start-resources-emergency-nutrition-personnel>

A Tool for Framing a Discussion between Nutrition and Agriculture Specialists

Organization: The TOPS Program

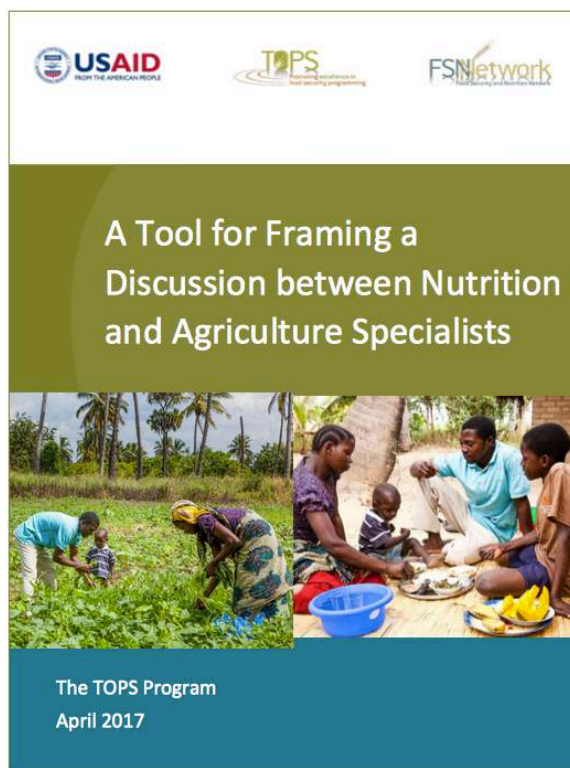
Presenter(s): Julia Crowley & Joan Jennings

Contact: jcrowley@savechildren.org;
jjennings@savechildren.org

Description: The tool provides project staff responsible for agriculture and nutrition with four user-friendly steps through which they combine their skills and expertise to select and prioritize crops to be promoted at household level.

Intended Use/Users: Agriculture and nutrition project staff

Access: <https://www.fsnnetwork.org/tool-framing-discussion-between-nutrition-and-agriculture-specialists>



A Training Workshop Guide: Planning for Qualitative Research for Nutrition

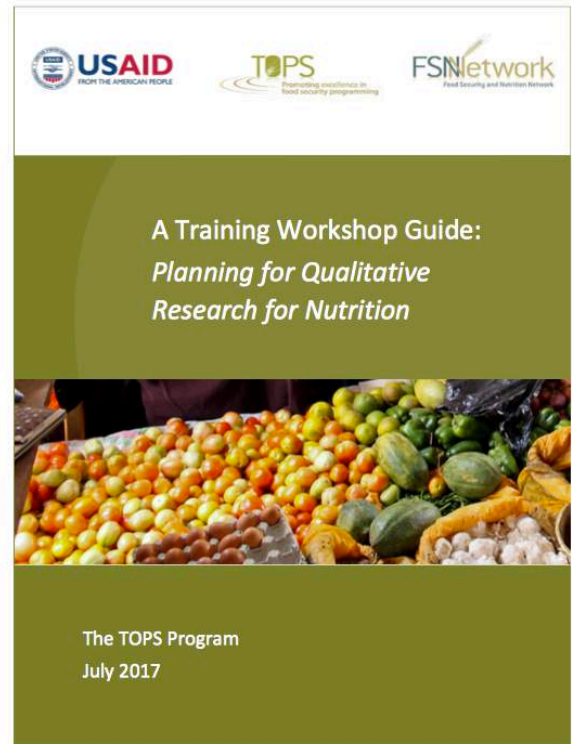
Organization: The TOPS Program

Presenter(s): Julia Crowley & Joan Jennings

Contact: jcrowley@savechildren.org;
jjennings@savechildren.org

Description: This guide is designed to be used in conjunction with a workshop on strengthening the capacity of FFP-funded implementing partners to refine plans and objectives for conducting qualitative research to inform the design and implementation of nutrition activities

Access: <https://www.fsnnetwork.org/training-workshop-guide-planning-qualitative-research-nutrition>



Nutrition Program Design Assistant: A Tool for Program Planners (NPDA)

Organization: The CORE Group, Food and Nutrition Technical Assistance Project (FANTA)/FHI360 and Save the Children

Presenter(s): Kristen Cashin

Contact: kcashin@fhi360.org

Description: The NPDA provides guidance on using available data to design community-based nutrition programs which are appropriate for a given geographic area and target group. It focuses on preventive programming, particularly in areas with high prevalence of stunting and also provides guidance on recuperative approaches which may be included in preventive programs.

Intended Use/Users: Program design/planning teams. It is best used in collaboration with partners.

Access: <https://coregroup.org/resources/library/>

Guide to Anthropometry: A Practical Tool for Program Planners, Managers and Implementers

Organization: FANTA/FHI360

Presenter(s): Kristen Cashin

Contact: kcashin@fhi360.org

Description: A user-friendly reference which provides up-to-date information on collecting, understanding and using anthropometry (the scientific study of the measurements and proportions of the human body) as part of nutrition program design, service provision, surveillance, surveys or monitoring and evaluation in low-resource settings. Guide to Anthropometry explains key concepts and includes modules on children 0-5 years, children/adolescents 5-19 years, pregnant/postpartum women and girls, and adults, as well as measurement protocols.

Intended Use/Users: Individuals engaged in improving food security, nutrition or health in developing countries

Access: <https://www.fantaproject.org/tools/anthropometry-guide>

LESS Last Mile

Organization: World Food Programme

Presenter(s): Charles Ibaale

Contact: charles.ibaale@wfp.org

Description: WFP has introduced a new commodity tracking initiative in Uganda to record real time movement of food and improve the accountability and accuracy of commodity accounting information, focusing predominantly on the real time recording of goods receipt at cooperating partner site. WFP LESS uses a handheld mobile device for commodity tracking from extended delivery points to final delivery points. The initiative also provides a higher data security standard through the identification of a partner by user name and password. The tool scans QR codes (two-dimensional barcodes) from waybills and confirms receipts instantly. This enhances accountability of the user by tracking distributions through GPS.

Intended Use/Users: WFP and partners in managing distributions.



Optimus



Organization: World Food Programme (WFP)

Presenter(s): Koen Peters

Contact: koen.peters@wfp.org

Description: Optimus is an in-house developed software which optimizes WFP operations from an end-to-end perspective, generating some \$30 million in savings every year. It examines the design of the food basket, the transfer modality selection, and the sourcing and delivery plan in order to find the best way to achieve programmatic outcomes (nutritional value, dietary diversity, etc.) given operational constraints. Optimus' methodology helps WFP ensure that its operations are as efficient and effective as possible. The tool was developed in close collaboration with experts from all functional areas involved in managing WFP operations, from programme officers and port captains to nutritionists and pipeline managers.

Intended Use/Users: Optimus is used by WFP staff to optimize their operations.

Access: <http://optimus.wfp.org>

FAQR Supply Chain Optimization Model

Organization: The Food Aid Quality Review (FAQR) Project, Tufts University and partners at Northeastern University

Presenter(s): Ozlem Ergun & Keziban Rukiye Tasci

Contact: o.ergun@northeastern.edu; tasci.k@husky.neu.edu

Description: This tool is designed to increase cost effectiveness of food aid operations of USAID's Office of Food for Peace from procurement to final delivery point. The tool provides optimized solutions by running the scenarios from historical and estimated data.

Intended Use/Users: USAID's Office of Food for Peace (FFP)

Access: <https://foodaidquality.org/focus/food-quality-safety>

Last Mile Mobile Solution LMMS ®

Organization: World Vision International

Presenter(s): Giselle Drouillard-Salom

Contact: giselle_drouillard-salom@wvi.org

Description: LMMS is a portfolio of innovative technology solutions—a mobile Information Management platform for humanitarian service delivery—developed by World Vision in collaboration with other humanitarian agencies and the private sector. LMMS is a set of mission-critical capabilities for organizations the delivery humanitarian services in the “last mile—the final point of transaction between humanitarian organizations and beneficiaries.



Intended Use/Users: LMMS is a stand-alone system designed for field-level deployments where the systems can run locally. In addition to capturing data, the information gathered is immediately available for use in programs.

Because LMMS is based on a modular platform, it can grow to encompass your emerging needs such as cash transfers, e-vouchers and mobile banking.

LMMS supports greater accountability by keeping record of a personal login and password each time a user logs in, creating an audit trail for all transactions each time the server and/or mobile device is accessed at any point in the process. LMMS can function offline in locations with no internet or mobile telephone access and no electricity. It also works online when internet connectivity is available.

The product’s solutions include:

- Registration of beneficiaries and households
- Distribution:
 - In-Kind Solution—general distribution of any In-Kind (un) conditional Aid or Targeted Feeding, etc. and Last Mile Inventory Management System
 - Cash Solution—E-Voucher, E-Cash, Paper Voucher, etc. and Payment Instruction File (PIF) creation
- Management Insights & Analytics
- Reports, Dashboards, Data Visualization
- Multi-Agency Solution
- Multi-Agency Capabilities, Segmented Reporting, Complete Distribution View

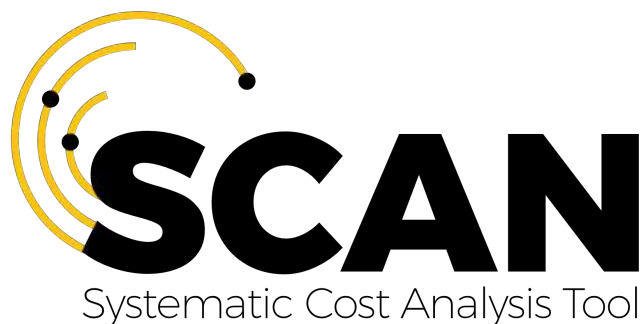
Access: <https://www.youtube.com/watch?v=Fh6P6zdlSzQ&t=94s>

Systematic Cost Analysis Tool (SCAN)

Organization: International Rescue Committee (IRC)

Presenter(s): Erin Byrne

Contact: erin.byrne@rescue.org



Description: The Systematic Cost Analysis (SCAN) tool is a web-based cost efficiency analysis software. SCAN is designed to simplify the process of conducting cost analysis for country-based program teams. The SCAN tool enables users to easily input the best information available on which resources supported a program and allocate resources to specific outputs per experience in the field. Embedding the methodology in a software system also ensures that all cost analyses meet common methodological standards, which improves the comparability of data generated by the tool.

Intended Use/Users: The SCAN tool is designed to improve the availability of context-specific cost efficiency data for interventions run by humanitarian actors. Program staff at implementing organizations can use SCAN to answer a host of program- and budget-related questions. The ultimate goal is to facilitate access to the cost data needed to improve program decision-making processes to achieve greater reach and impact for crisis-affected populations.

Access: Fact Sheet: <https://www.rescue.org/report/systematic-cost-analysis-scan-tool-fact-sheet>
SCAN Tool Demo: <https://vimeo.com/189784981>

Infant and Young Child Feeding (IYCF) Image Bank



Organization: Strengthening Partnerships, Results and Innovations in Nutrition Globally (SPRING)

Presenter(s): Gwyneth Cotes

Contact: gwyneth_cotes@jsi.com

Description: The Infant and Young Child Feeding (IYCF) Image Bank is an online, searchable database which includes over 700 images, developed from adaptations of UNICEF's *Community Based Infant and Young Child Feeding (CB-IYCF) Counselling Package*. These, and other similar images of recommended IYCF practices, have been used in more than 70 countries for counseling and training to promote behavior change for improved maternal and child nutrition.

Until now, editable versions of the original illustrations and the adaptations of these images have been held by UNICEF and different organizations, without a systematic way to share these images or make them more widely available. The IYCF Digital Image Bank makes the CB-IYCF's generic illustrations and specific adaptations available in editable formats.

Intended Use/Users: The tool is intended for organizations who wish to create print materials and other visual aids aimed at promoting maternal, infant and young child nutrition.

Access: <https://iycf.spring-nutrition.org/>

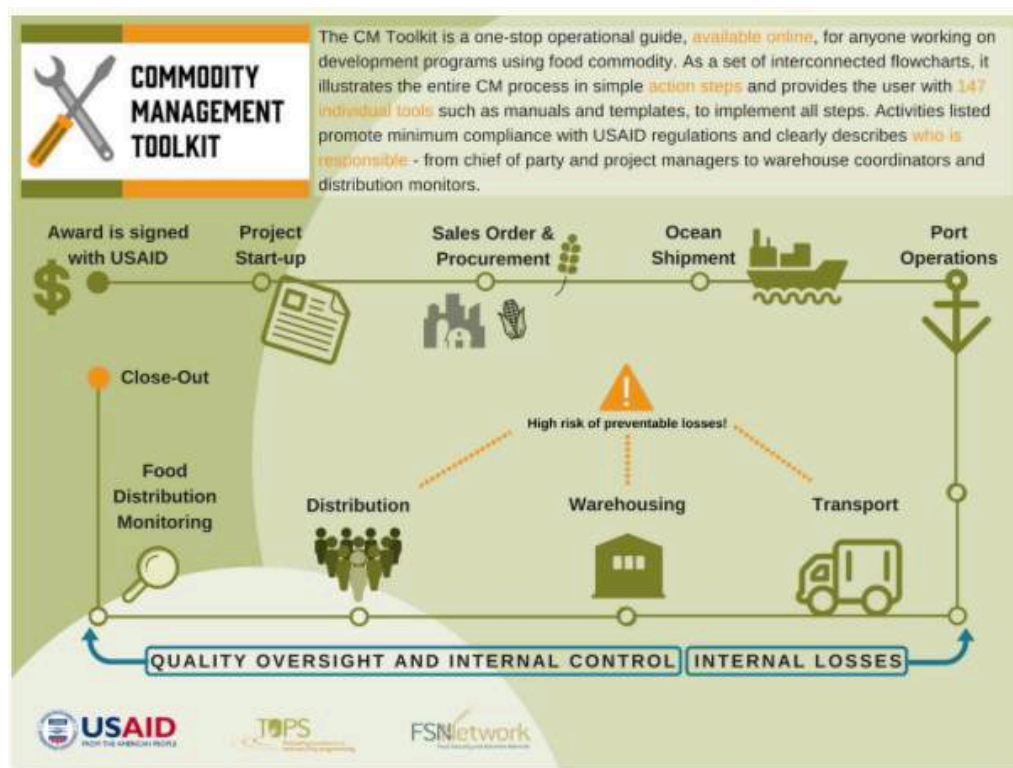
Commodity Management (CM) Toolkit

Organization: The TOPS Program/Save the Children

Presenter(s): Virginia Vaughn

Contact:
vvaughn@savechildren.org

Description: The CM Toolkit is a one-step operational guide for anyone working on programs using food commodity. It is a set of interactive flowcharts which provide a road map of the entire commodity management process—from project start-up through close-out—in simple steps. In addition to illustrating each activity required to promote compliance with USAID regulations—and the functional area(s) accountable—the toolkit provides instant access to 147 tools designed to help users implement these activities.



Intended Use/Users: The CM Toolkit provides staff with quick access to the specific information they need on minimum requirements, whenever and wherever they need it. It can be used both as a self-study training resource for new staff and as a quick reference for more experienced staff.

Access: <https://www.fsnnetwork.org/commodity-management-toolkit>

REFINE (Research Engagement on Food Interventions for Nutritional Effectiveness)



Organization: The Food Aid Quality Review (FAQR) Project, Tufts University

Presenter(s): Ayten Salahi, Patrick Webb & Maria Wrabel

Contact: ayten.salahi@tufts.edu; patrick.webb@tufts.edu; maria.wrabel@tufts.edu

Description: REFINE—Research Engagement on Food Interventions for Nutritional Effectiveness—was established in 2012 as an outcome of the Food Aid Quality Review. REFINE is a knowledge-sharing mechanism which aims to improve the effectiveness of food-supported interventions. REFINE's goal is to improve the nutritional or health status of vulnerable populations worldwide by: 1) sharing information and resources on innovations and research relevant to food-supported interventions which support better nutrition outcomes; 2) engaging with the broad food aid community, including researchers, policymakers and programmers, through the REFINE website, Twitter (@refinenutrition) and resource reviews; 3) facilitating discussion and presentation of findings of relevant literature; and 4) promoting a focus for future research investments and help coordinate where appropriate. The REFINE website contains a map of ongoing studies involving food assistance products and programs, a searchable digital library of published and ongoing studies and a discussion of current evidence gaps in food aid, determined by a team of international experts.

Intended Use/Users: This resource is intended to facilitate access to and conversation about the evidence base on food aid for nutrition. Researchers, policymakers, programmers and product developers can use REFINE to share research and find evidence to support decision-making.

Access: <http://refinenutrition.org>; <https://twitter.com/REFINEnutrition>

NutVal

Organization: University College London
(UCL) Institute for Global Health

Presenter(s): Andrew Seal

Contact: a.seal@ucl.ac.uk

Description: NutVal is a widely-used spreadsheet application developed in Excel 2010 for the planning, calculation and monitoring of the **Nutritional Value** of food assistance. It aims to help ensure that nutritionally-adequate food assistance is provided so as to minimize public health problems, especially micronutrient deficiencies.

Initially developed by United Nations High Commissioner for Refugees (UNHCR) in the late 1990s, NutVal has been maintained and developed by University College London (UCL) since 2003, with support from World Food Programme (WFP), UNHCR, the Global Nutrition Cluster and the Office of Foreign Assistance Disaster (OFDA).

NutVal four has five main functions:

- 1) Food and Nutrient Database: comprised of information on the nutrient content of common food assistance items;
- 2) Ration Calculator: for calculating the nutrient content of a food assistance ration for an individual;
- 3) Logistics Calculator: for planning a food assistance program;
- 4) Ration Tracking: provides tables and graphs for comparing the content of different rations; and
- 5) On-site Distribution Monitoring: a software tool for food basket monitoring.

Intended Use/Users: NutVal is designed to make the job of program managers, nutritionists and health staff easier and more effective.

Access: <http://www.nutval.net/>



NutVal 4.1



A spreadsheet application for planning, calculating
and monitoring the Nutritional Value of food assistance
Developed for WFP and UNHCR by the UCL Institute for Global Health

The *Food and Nutrient Database* and *Ration Calculator* can help you select commodities and products and calculate the nutrient content of food assistance rations. The *Logistics Calculator* can be used to calculate food requirements and costs for programmes. Rations can be saved and compared using the *Ration Tracker* function. The *On-Site Distribution Monitoring* function is for collecting and analysing distribution data (also called food basket monitoring). NutVal 4 is not designed for calculating diets for the treatment of malnutrition but therapeutic and supplementary feeding products are included in the database for easy reference. To use NutVal you must *enable macros* when you start the application. Click one of the buttons to start or read the help pages for more information.



Help and Information

[What's new in NutVal 4.1?](#)
[Optimising your screen view](#)
[How to enable macros](#)
[Food and nutrient composition data](#)
[Planning and calculating a ration](#)
[Using the Logistics Calculator](#)
[How to track nutrient content over time](#)
[On-Site Distribution Monitoring](#)
[Acknowledgements](#)
[Abbreviations](#)

Full Screen View

© 2014-2016

Email: support@nutval.net

Web site: www.nutval.net

Fill the Nutrient Gap (FNG)

Organization: World Food Programme (WFP)



Presenter(s): Saskia de Pee

Contact: Saskia.depee@wfp.org

Description: Advancing national multi-sectoral nutrition policies and programming can greatly benefit from an assessment of opportunities and challenges for meeting nutrient requirements of key target groups, as this is a prerequisite for preventing malnutrition.

The Fill the Nutrient Gap (FNG) provides a framework for strengthened situation analysis and multi-sectoral decision making that identifies context-specific barriers to adequate nutrient intake among specific target groups and engages different sectors to propose cost-effective strategies to overcome them. The analysis leverages secondary sources of data and information on factors that directly or indirectly impact whether people can access and consume nutritious foods, and ultimately, whether they meet recommended nutrient intakes. The Cost of the Diet tool, developed by Save the Children, is used to estimate the lowest cost of a nutritious diet based on locally available foods and its affordability based on current food expenditure of the population.

This consolidated information is reviewed by a multi-sectoral group of stakeholders to come to a shared understanding of the issues, context and solutions to improve access to a nutritious diet. Through this consultation process, context-specific optimal policy and program actions including possible entry points for interventions are jointly identified for different sectors (e.g. health, social protection, agriculture, food processing, education) and by stakeholders from both public and private sector.

Intended Use/Users: The FNG is meant to inform design of national policies and strategies for improving nutrition (SDG 2.2). The audience and contributors are national level stakeholders from multiple sectors, such as those participating in the SUN platform. WFP's FNG team together with national champion(s) conduct the analysis and facilitate interpretation and formulation of recommendations by stakeholders.

Access: https://www.wfp.org/content/2017-fill-nutrient-gap?_ga=2.134644149.59044272.1526457497-1325315182.1507034485;

Webinar (English, French, Spanish): <http://www.securenutrition.org/resource/fill-nutrient-gap-webinar-resources-english-francais-and-espanol>;

The WFP VAM shop: <http://vam.wfp.org> has full reports and slide decks of the main findings as presented, per country (check for assessments, miscellaneous)

SCOPE CODA

SCOPE
Enable the Change

CODA
Conditional On-Demand Assistance

Organization: World Food Programme (WFP)

Presenter(s): Craig M. Arnold

Contact: craig.arnold@wfp.org

Description: SCOPE CODA merges identity and programme management into a digital system that manages and tracks individuals in treatment programmes. SCOPE CODA is an end-to-end digital system that gives frontline workers a tool to improve individual treatment and provides managers with up-to-date, reliable information to share across stakeholders and, ultimately, improve programmatic outcomes.

Intended Use/Users: SCOPE CODA was developed to digitize community management for acute malnutrition (CMAM) programming, but plans to extend into other programmes, including integrated health and nutrition for under 5 and pregnant and lactating women (PLW), Conditional Transfers, and HIV/TB Treatment. The system is an end-to-end solution for all staff in treatment programmes, from frontline workers to managers.

FAQR Decision Support Tool for More Cost-Effective Programming of Specialized Nutritious Foods

Organization: Food Aid Quality Review (FAQR) Project, Tufts University

Presenter(s): Ye Shen & Stephen Vosti

Contact: ye.shen@tufts.edu;
vosti@primal.ucdavis.edu

Description: The interactive Decision Support Tool application aims to achieve greater impact-for-money in programming a growing variety of specialized nutritious food products (e.g. ready-to-use foods and fortified blended foods) for nutrition-specific interventions among populations vulnerable to undernutrition in humanitarian and development contexts.

The screenshot shows the top navigation bar of the Decision Support Tool with tabs for 'Decision Support Tool', 'Instructions', 'Main Tool Interface', and 'View Saved Scenarios'. Below the navigation bar is a title 'Decision Support Tool for More Cost-Effective Programming of Specialized Nutritious Foods' and a section for 'Instructions'. The instructions list four key steps: selecting a nutrition programming purpose, using the main tool interface, cautioning about saved scenarios, and switching between purposes. At the bottom of the screenshot is a selection panel with three buttons: 'Treatment of Moderate Acute Malnutrition (MAM)' (blue), 'Treatment of Severe Acute Malnutrition (SAM)' (maroon), and 'Prevention of Undernutrition' (grey).

The Decision Support Tool's conceptual framework was developed to guide users through a range of program, cost and impact parameters which are crucial to cost-effectiveness. Users can view how their choice for each input parameter would affect the calculated results for a list of cost and cost-effectiveness indicators. To guide user input, available data and references are supplied via interactive text and visualization. Examples of data sources include USAID historical cost databases, literature on coverage and health outcomes, and other relevant guidance. Additional features allow sensitivity analyses to compare across multiple scenarios.

Intended Use/Users:

- 1) Support decision-making in program design and proposal development which involve programming of specialized nutritious foods; and
- 2) Capacity building/training of relevant staff at USAID/FFP and implementation partner organizations.

Funders from USAID/FFP office and implementers from partners/organizations who are involved in making program decisions around the use of specialized nutritious food products.

Access: Beta version: go.tufts.edu/FAQR

FAO/WHO GIFT (Global Individual Food Consumption Data Tool)

Please note that this tool is **not being presented at the Evidence Summit**

Organization: Food and Agriculture Organization of the United Nations and World Health Organization

Presenter(s): Nutrition and Food Systems Division, FAO Headquarters, Rome

Contact: fao-who-gift@fao.org

Description: FAO/WHO GIFT is an interactive, easy-to-use, online dissemination platform providing: 1) information about existing quantitative data on individual food consumption; 2) indicators in a form of infographics for users with low scientific literacy; and 3) free download of microdata for further analysis. FAO/WHO GIFT is conceptualized to be truly global and is continuously expanding. The platform provides detailed information on food consumption surveys from low- and middle-income countries which potentially meet requirements to be inserted in the database. Many are small-scale surveys, but data exist. In April 2018, the individual quantitative food consumption surveys presented in the inventory map are 162, from which five are shared as microdata and available to produce indicators, and 11 are in the pipeline for sharing.

Intended Use/Users: FAO/WHO GIFT aims at supporting policymakers, program planners, NGO staff and many other stakeholders in taking informed decisions at country, regional and global level in the area of nutrition and food safety by making publicly available existing individual quantitative food consumption data from all countries around the world, collected through both large nationwide surveys and small-scale surveys.

Access: <http://www.fao.org/gift-individual-food-consumption/en/>

